



**COLORADO**

Department of  
Transportation



## **Town of Minturn 2019 CDOT Project Update**

**US 24 Minturn Resurfacing  
STR 0241-062 – 20813  
February 6<sup>th</sup>, 2019**



**COLORADO**  
Department of  
Transportation



---

## Overview

Project Overview

Construction Impacts and Schedule

Public Information Services





**COLORADO**  
Department of  
Transportation



---

## Project Overview

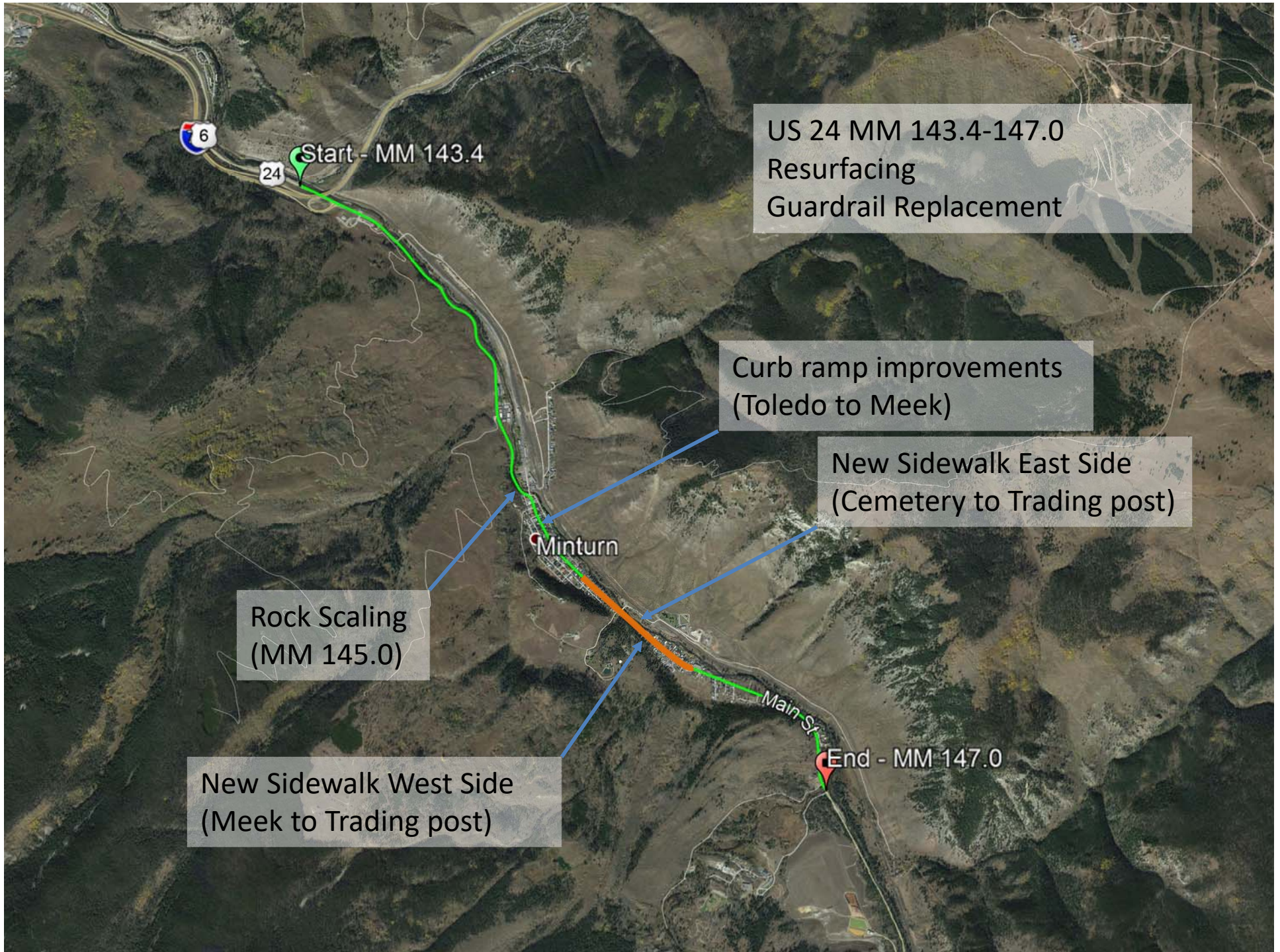
### CDOT Resurfacing Project

- 2" Mill and Overlay US 24 MM 143.4-147 (Dowd Junction to Cross Creek)
- Guardrail replacement
- Rockscaling around MM 145.0 near entrance to Town
- ADA Accessible Curb ramp improvements Toledo to Meek

### Town of Minturn TAP Project

- New 5' sidewalk along west side of road Meek to near Battle Mountain Trading Post
  - New 5' sidewalk along East side of road from Cemetery Road to near Battle Mountain Trading Post
  - New storm sewer system and additional fire hydrants
  - New on-street parking in some locations
-





US 24 MM 143.4-147.0  
Resurfacing  
Guardrail Replacement

Curb ramp improvements  
(Toledo to Meek)

New Sidewalk East Side  
(Cemetery to Trading post)

Rock Scaling  
(MM 145.0)

New Sidewalk West Side  
(Meek to Trading post)

Minturn

Main St

End - MM 147.0





# COLORADO

Department of  
Transportation
















**COLORADO**  
Department of  
Transportation



## Construction Schedule

	Q1	Q2	Q3	Q4
Construction Begins				
Rock Scaling				
Drainage Work				
Sidewalk Work				
Guardrail				
Resurfacing				
Construction Complete				



**COLORADO**  
Department of  
Transportation



---

## Construction Impacts

- Access to be maintained to properties at all times
- Expected maximum traffic delay of 15-20 minutes
- No construction traffic through neighborhoods
- On-street parking may be restricted at times in specific blocks to allow for two way traffic
- 2 Work Zones allowed with only one lane closed - Flagger controlled
  - Generally no lane closures 7 AM to 9 AM
- Rock Scaling - 20 minute full closures at north side of Town
  - Allowed 9 AM to 4:30 PM





**COLORADO**  
Department of  
Transportation



---

## Construction Impacts

- Working hours 7 am - 7 pm Monday through Friday.
- No major holiday work
  - Summer Concerts
  - Minturn Market
  - Major bicycle events including Courage Classic
  - Memorial Day
  - 4<sup>th</sup> of July including Town celebration on July 2<sup>nd</sup>
  - Labor Day



**COLORADO**  
Department of  
Transportation



---

## Public Information Services

- Full time project Public Information Manager
- Dedicated local Project Hotline
  - Recorded project update message each week minimum
  - Messages returned within 24 hours on working days
- Dedicated project web page
- Newspaper ads prior to construction
- Project fliers prior to construction
- Monthly updates in Town of Minturn newsletter



**COLORADO**  
Department of  
Transportation



**Questions?**

